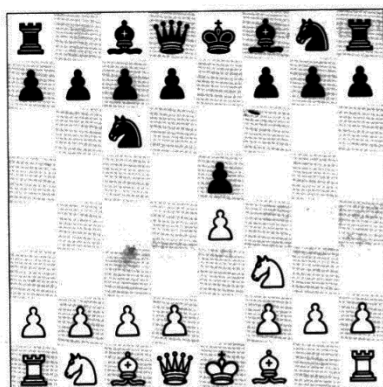
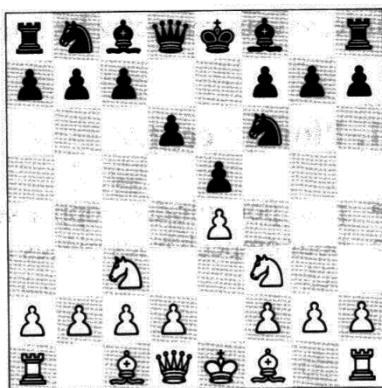


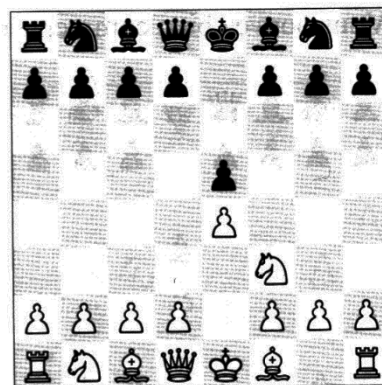
Applique les règles d'or pour choisir ton coup parmi les 3 propositions  
 Le trait est aux blancs, sauf si point noir dans le coin en haut à droite



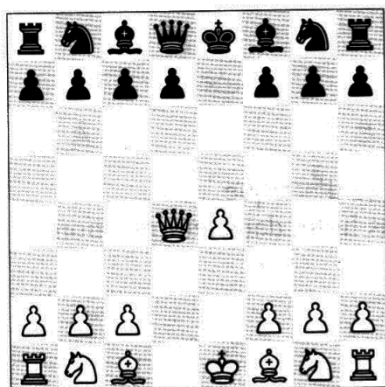
Ff1-d3 Ff1-c4 Cb1-a3



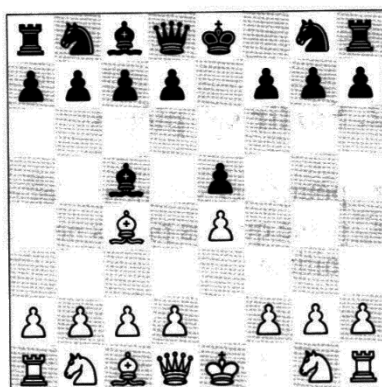
Ff1-c4 Ff1-b5+ Ff1-e2



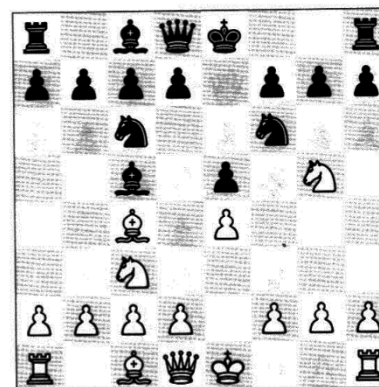
f7-f6 Cb8-c6 Dd8-e7



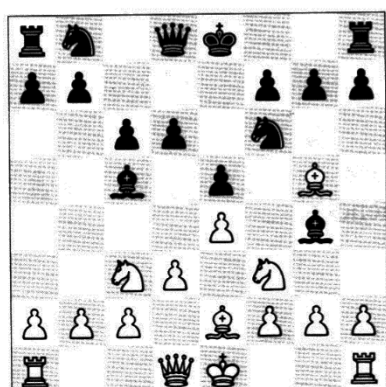
c7-c5 Cb8-c6 d7-d6



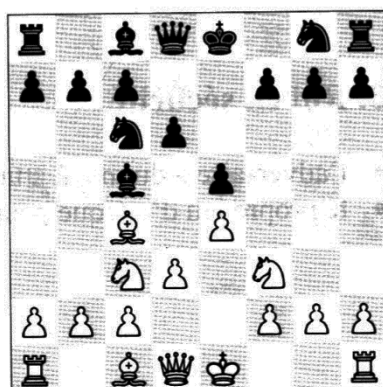
Dd1-f3 Cg1-f3 Dd1-h5



0-0 Dd8-e7 Th8-f8



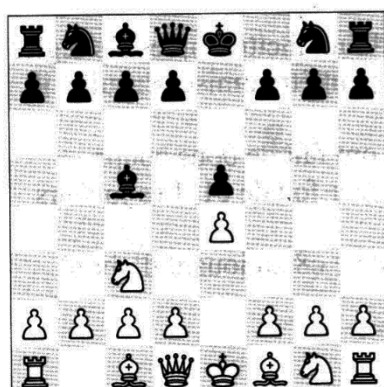
Fg5-e3 Fg5xf6 0-0



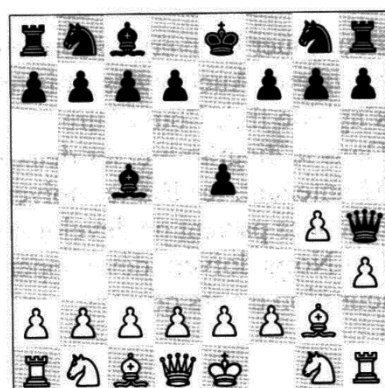
Cg8-e7 Fc8-d7 Cg8-f6



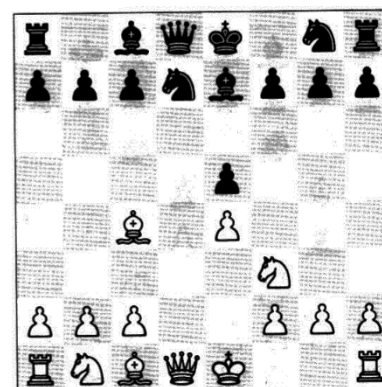
Cf3xe5 0-0 Cf3-g5



Ff1-b5 d2-d3 Cg1-f3



d2-d4 Cg1-f3 e2-e3



Cb1-c3 0-0 Dd1-d5